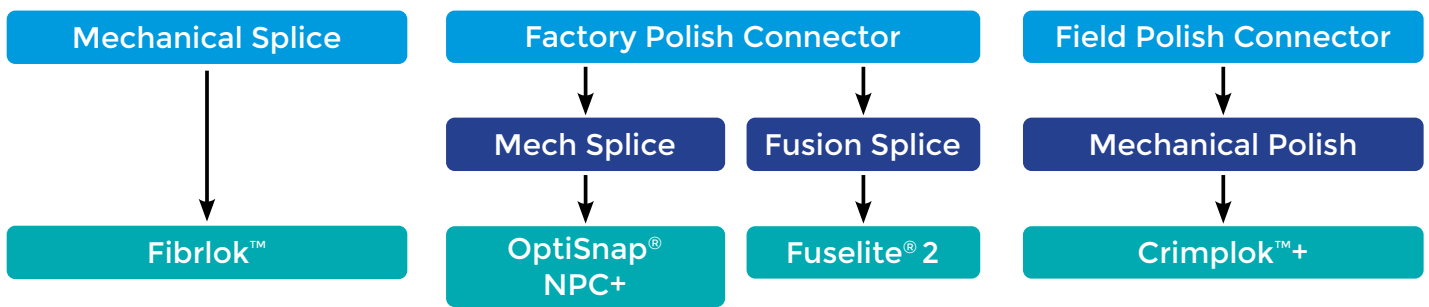
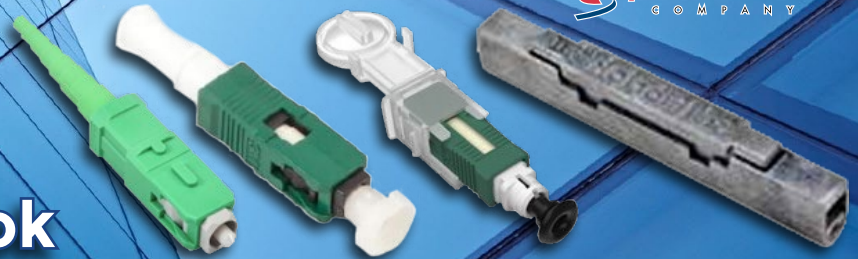


CORNING FTTH Connectors: OptiSnap, NPC+, Fibrolok and Crimplok



	SCU/250/900	SCU Jacketed	SCA/FS 250/900	SCA/AS 250/900	SCA/FS Jacketed	SCA/AS Jacketed
OptiSnap®	X	X	X		X	
Fuselite® 2	X	X	X		X	
Crimplok™+	X		X			
NPC+			X			

	LCU 250/900	LCU Jacketed	LCA 250/900	LCA Jacketed	ST/UPC 250/900	ST Jacketed
OptiSnap®	X	X	X	X	X	X
Fuselite® 2	X	X	X	X	X	X
Crimplok™+						
NPC+						

	Polish	Typical IL (dB)	Max IL (dB)	Reflectance at 25C +/- 5C (dB)	Max Reflectance in Operating Temp Range, -40C to 75C (dB)
OptiSnap®	UPC	0.2	0.5	< -55	< -32
	APC	0.3	0.75	< -60	< -40
Fuselite® 2	UPC	0.15	0.3	< -55	< -55
	APC	0.15	0.3	< -65	< -65
Crimplok™+	UPC	0.2	0.5	< -40	< -35
	APC	0.25	0.6	< -65	< -60
NPC/AS	APC	0.3	0.6	< -65	< -60
NPC+	APC	0.3	0.6	< -55	< -35

What product features best fit my business model?

- I want to minimize up-front expenses (tools and training). NPC+
- I need a connector that minimize opportunities for installer error i.e. has fewest installation steps..... NPC+
- I need superior reflection performance without investment in an angled cleaver or fusion splicer..... Crimplok™+
- I want an easy to use installation solution for all connector types (ST, SC, LC)..... OptiSnap®
- I want a tool that provides a positive indication of continuity at the time of installation..... OptiSnap®

Learn more about the connectors, why and where they are used and which one is the right connector for your application.



This mechanical field polish connector delivers superior performance in reflectance in the outdoor environment (<60db reflectance) without the investment in an angled cleaver.

Specifications	
Insertion loss (dB) typical	(APC) 0.25 dB, (UPC) 0.2 dB
Reflectance (dB) typical at room temperature	(APC) < -65 dB, (UPC) < 40 dB
Reflectance (dB) max over operating temperature	(APC) -60 dB, (UPC) -35 dB
Operating Temperature	-40°C to 75°C
Storage Temperature	-40°C to 85°C

- Field Polish Connectors
- Superior Performance
- Perfect for Outdoor Applications

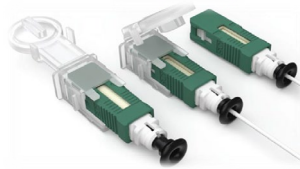


Part Number	Corning Catalog Number	Description	Qty (pieces)
745X850	80611622004	Crimplik™+ Connector SC/APC SM 250/900 μm with Activation Tool	1

• The NPC+ is the quickest installation at the lowest investment in installation tools and lowest incremental maintenance cost. A tool kit is **not required** if the customer has a flat cleaver, fiber strippers, and cleaning tools.

• Form Factors: **SCA only**, Cat #: NPCP-SCA-48

NPCP-SCA-48.....Part No.: [745X234](#)
 TKT-NPCP-FBC007.....Part No.: [745X425](#)
 TKT-NPCP-CI01.....Part No.: [745X230](#)



Tool Kit Cleaver Options

NPC+ w/FBC-007 Cleaver
 Catalog #: TKT-NPCP-FBC007

NPC+ w/CI-01 Cleaver
 Catalog #: TKT-NPCP-CI01



• The OptiSnap® solution delivers a versatile termination platform that offers confirmation of termination and speed of termination for less upfront and operating cost than splicing.

• Form Factors: **SCA, LCA, SCU, LCU**

TKT-OPTISNAP-CF.....Part No.: [745X768](#)



Tool Kit Requirements

OptiSnap® Installation Tool Kit; Catalog #: TKT-OPTISNAP-CF



• Delivers low loss mechanical splice with no investment in fusion splicer.



Tool Kit Requirements

Fibriok™ Installation Tool Kit; Catalog #: 880-6105-8187-0



Fibriok™ Splices Specifications		
Product Number	2529	2539
Fiber Diameter	125 μm	125 μm
Coating Diameter	250 or 900 μm	250 or 900 μm tight buffer
Insertion Loss (dB) Typical	<0.1	<0.1
Reflectance (dB) Typical	< -55	< -55
Reflectance Over Operating Temperature Range	< -35	< -35
Operating Temperature Range	-40°C to 75°C	-40°C to 75°C
Storage Temperature	-40°C to 75°C	-40°C to 75°C

Fibriok™ Single-Fiber Splice and Assembly Tool Ordering Information		
	Description	Part Number
	Fibriok™ II Universal Optical Fiber Splice 2529 (2529)	80-6107-5589-6 599X529
	Fibriok™ Assembly Tool 2501 (2501)	80-6105-8187-0 599X501