

BMP®41 Label Printer

BradyID.com/s36



BRADY360
2 YEAR
WARRANTY

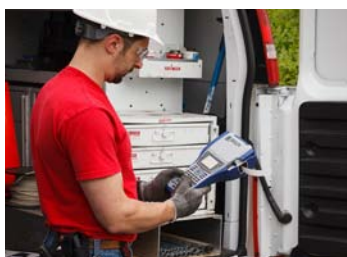
BMP®41 LABEL PRINTER

One and done

BMP41 label printer does it all

A rugged, handheld labeling solution that gives you the versatility of die-cut labels and continuous labels in one printer!

- Quick-load, drop-in cartridges for quick supply change and automatic label formatting
- Fast print speed of 1.3 in. per second
- Over 100 label parts with 11 materials
- 0.75 in. sleeves and 1 in. wide continuous output
- Drop-tested, rugged industrial bumpers with a grab-and-go grip to be on the move with you
- Large graphical LCD display with backlight to see exactly what you're printing
- Rechargeable NiMH battery or AC adapter for long-lasting power supply
- Built-in wizard-style apps for wire ID, cable flags, terminal blocks, patch panels, breaker boxes and general ID



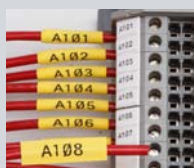
BMP41 label printer and accessories

Catalog #	Description
BMP41	BMP41 Label Printer with Hard Case*
BMP41-KIT-VD	BMP41 Printer DataComm Starter Kit*
BMP41-KIT-EL	BMP41 Printer Electrical Starter Kit*
BMP41-KIT-GI	BMP41 Printer Facility ID Starter Kit*
BMP41-BATT	BMP41 Rechargeable Battery Pack
BMP41-QC	BMP41 External Battery Quick Charger
M-AC-143110	BMP41 AC Adapter / Battery Charger
BMP41-MAGNET	BMP41 Magnet Accessory
M-USB-103788	BMP41 USB Cable
BMP41-HC	BMP41 Hard Case
BMP-SC-2	BMP41 Soft Case

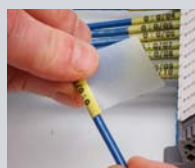
*Printer includes BMP41 printer, NiMH battery, AC adapter / charger, hard case, MC1-1000-595-WT-BK cartridge, USB cable, product and drivers CD, quick start guide and 2-year warranty.

Printer specifications	
Print speed	1.30 in. / sec.
Print and color capabilities	Thermal Transfer / Monochrome
Print resolution	300 dpi
PC compatibility or standalone	Standalone and PC connect
Connectivity options	USB
Software compatibility	Brady Workstation Apps, LabelMark™ Software,
Power supply options	NiMH rechargeable battery, AC adapter
Warranty	2 years
Dimensions	6.0 in. W x 11.5 in. H x 3.6 in. D
Weight	2.1 lbs. (w/o tape, batteries)
Print features	
Screen size	13 lines x 36 characters
Backlit screen	Yes
Keyboard style	QWERTY
Max print width	1.0 in.
Font types available	(2) Brady Alpine and Brady Fixed Width
Font sizes (pts)	Custom, auto, 4, 6, 7, 9, 10, 13, 14, 16, 20, 26, 28, 32, 38, 40, 42, 45, 51, 55, 60, 65
Multi-line label capabilities	25
Label print rotation	Yes
Data serialization	Yes, multiple and linked
Barcode capabilities and types	Code 39, Code 128 and more using Brady Workstation
Memory capacity	25,000 characters up to 48 MB
Data transfer from PC	Yes
Print preview	Yes
Symbols available	450
Label supplies	
Label / ribbon supply	Cartridge w/ included ribbon
Material formats	Continuous and die-cut labels
Media width	0.25 in. to 1.0 in.
Types of materials	Outdoor vinyl, nylon cloth wire ID, heat-shrink wire ID, self-laminating wire ID, removable cloth wire ID, standard polyester, aggressive adhesive polyester, metallized polyester, non-adhesive tag, outdoor reflective
Quantity of label parts available	100+ label parts
Cartridge series	M-series up to 1 in. wide

Exceptional material variety and durability



Electrical labeling



Self-laminating wire labels



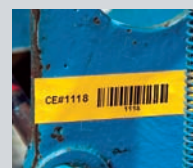
Voice and data communications



PermaSleeve® wire markers



Equipment labeling



Indoor and outdoor vinyl labels