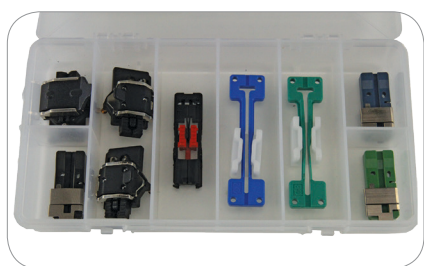
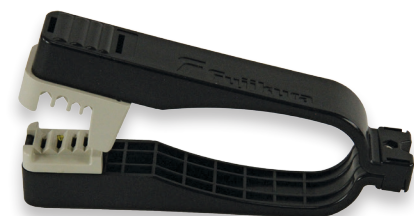




FUSEConnect Tool Kit Contents



FUSEConnect Accessory Kit



Cord Splitter Tool

## FUSEConnect® Tool Kit and Accessories

The FUSEConnect tool kit provides all the necessary installation tools required for fiber preparation of 900  $\mu$ m fiber, 2 mm or 3 mm cordage for AFL's FUSEConnect Fusion Spliced Field Installable Connectors except for a fusion splicer and precision cleaver. Included in the kit are standard fiber preparation tools and cleaning supplies as well as a FUSEConnect accessory kit and cord splitter tool, which can be bought separately from the tool kit. The cord splitter tool is uniquely designed to open the cordage of 2 mm and 3 mm cable allowing the termination of the ST and FC type connectors on simplex cordage.

### Applications

- Premise environments
- LAN Fiber to the Desk environments
- Patch panel/wiring closets
- FTTx applications
- Quick repair/replacement areas

### Features

- Industry standard fiber preparation tools
- Compact design, flexible yet rugged case

### Ordering Information

DESCRIPTION	AFL NO.
<b>FUSEConnect Tool Kit (includes items below)</b>	<b>FUSE-TL-KT</b>
Tool Case	CS001202
Fiber Stripper	CS001205
Kevlar Scissors	C095257
Lint-Free Wipes	FM000413
Fiber Preparation Fluid	FPF1-00-0900
Permanent Marker	C015830
Cord Splitter Tool	FUSE-ST-TL
FUSEConnect Accessory Kit	FUSE-AC-KT
<b>FUSEConnect Accessory Kit (includes items below)</b>	<b>FUSE-AC-KT</b>
Utility Storage Box	CS012351
Clamp for holding 3 mm Simplex Cordage	S014704
Clamp for holding 2 mm Simplex Cordage	S014705
250 $\mu$ m / 900 $\mu$ m Fiber Clamp	CS004442
3 mm FUSEConnect Fiber Holder	S014695
2 mm FUSEConnect Fiber Holder	S014696
900 $\mu$ m FUSEConnect Fiber Holder	S014697
CLAMP-S70D Sheath Clamp	S015862
CLAMP-S60D Sheath Clamp (Left side)	S014752
<b>Cord Splitter Tool</b>	<b>FUSE-ST-TL</b>