

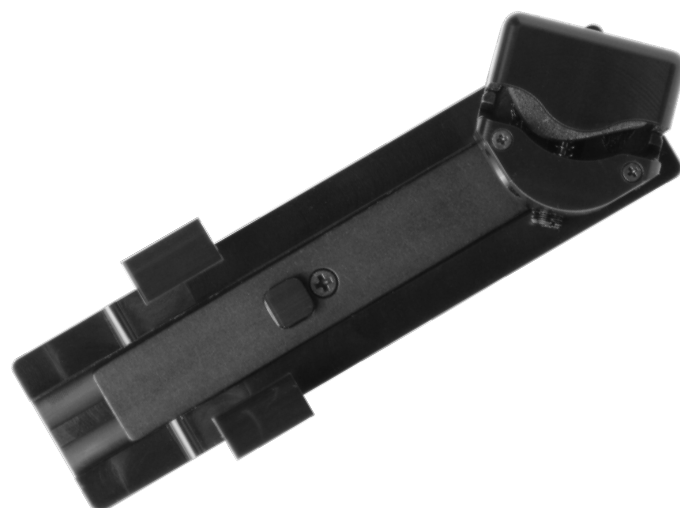
LFI 110

Live Fiber Identifier Accessory

Test Core Power and Check Continuity

The LFI 110 Live Fiber Identifier Accessory is a rugged accessory tool that is designed to fit onto the RP 4XX series optical power meters. This useful device allows the detection of active channels or 2kHz tones on any single mode network. The LFI 110 is designed to accommodate 250 micron, 900 micron, 2mm or 3mm jacketed fibers. The accessory simply snaps on to the RP 450 or RP 460 optical power meter unit, increasing the functionality of the power meter to include live fiber identification.

Measurements displayed on the RP 4XX power meter will have direct correlation to the actual core power with measurement repeatability of +/-2dB. No longer is it necessary to purchase a stand-alone fiber identifier for active channel identification. The LFI 110 allows the technician to identify available fibers in the F2 portion of the FTTx network without the disruption of existing subscribers. The LFI/RP 4XX combination also allows 2kHz tone detection when used with compatible ODM laser sources.



Features

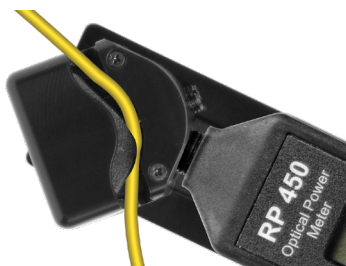
- FTTx active OLT or ONT detection
- Easily snaps on to RP 450 or RP 460 optical power meter
- Allows in-service testing on single-mode networks
- Accepts 250um to 3mm jacketed fiber
- Detects 2kHz tone from compatible laser signal generators, such as ODM's DLS 355
- Non-invasive testing - will not cause alarm in active channel



Attach LFI 110 accessory to turn the RP 450 or RP 460 Power Meter (sold separately) into a Live Fiber Identifier.



The power meter recognizes incoming 2kHz modulated "tones" when the LFI leaks signal through the fiber jacket.



Insert fiber into LFI channel and pull trigger on unit to initiate macro bend in fiber. The LFI does not cause excess loss in the network.



LFI can be purchased alone or as part of the TTK 210 kit (LFI 110 and RP 450 together). TTK 210 comes with a hard carrying case.

Specifications

LIVE FIBER IDENTIFIER ACCESSORY	
Network Configuration	Singlemode Long Haul, CO to CO or FTTX
Induced Loss (SMF 28)	<1.5dB @ 1550nm Wavelength
Absolute Core Accuracy	± 2dB Within Measurement Range
Tone Identification	2kHz
Dimensions	4" x 1.5" x 1.5" (10 x 1.25 x 1.25 cm)
Weight	2.0 oz (56.7 g)

Ordering Information

PART NO.	NOTES
LFI 110	Live Fiber Identifier Accessory only. Attach to RP 450 or RP 460 power meter for live fiber identification functionality.
TTK 210	Live Fiber ID kit. RP 450-02 optical power meter with LFI 110 accessory. Kit housed in hard carry case.

Power Meter Adapters

PART NO.	DESCRIPTION
AC 020	2.5 mm Universal Adapter
AC 021	1.25 mm Universal Adapter
AC 026	SC Adapter for Optical Power Meter
AC 027	ST Adapter for Optical Power Meter
AC 028	FC Adapter for Optical Power Meter
AC 029	LC Adapter for Optical Power Meter
AC 126	SC/APC Adapter for Optical Power Meter

Patch Cord Accessories

PART NO.	DESCRIPTION
AC 500	SM SC-LC - 1m Simplex
AC 501	SM SC-SC - 1m Simplex
AC 502	SM LC-LC - 1m Simplex
AC 550	MM SC-LC - 1m Simplex
AC 552	MM LC-LC - 1m Simplex
AC 600	SC-SC Simplex Bulkhead Adapter
AC 601	LC-LC Simplex Bulkhead Adapter
AC 602	LC-LC Duplex Bulkhead Adapter

Cleaning Tools

PART NO.	DESCRIPTION
AC 089	One-Click Cleaner for 1.25mm & ODC Ferrules / Bulkheads
AC 099	One-Click Cleaner for 2.5mm Ferrules / Bulkheads
AC 090	1.25mm Swabs (100 per Pack)
AC 091	2.5mm Swabs (100 per Pack)
AC 092	SqR Pad & Fiber Wash Pen
AC 190	Cletop Cleaner - Type B - Blue Tape

Ripley ODM® brand test equipment is furnished with a 2 year warranty extending from the original date of purchase. Contact Ripley Tools for information on recalibration and repair of test equipment. Ripley makes every effort to ensure that all information in this data sheet is accurate. Ripley Tools assumes no responsibility for any errors or omissions and reserves the right to modify this document at any time without notice. Please contact Ripley ODM® brand specialists for pricing and availability of equipment.

