

[END-FACE CLEANER]

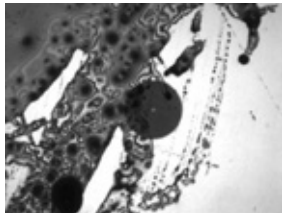
- Compact and reliable cleaner for connector end-face
- Easy cleaning in field installation or factory

SHM-501 (HandiMate™)

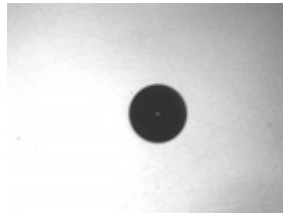


- Handy and high performance cleaner that fits in your hand and achieves cleaning more than 500 times
- Just one sliding motion enables to remove contamination such as dust or oil on optical connector end-face
- Connector to be set on guide holder enables stable and even cleaning result always

Part No.	SHM-501
Application	Clean simplex connector tip
Dimension	H110xW68xD28mm (Cap opened)
Weight	75g
Operation	Slide type
Life	More than 500 times
Applicable connector	SC, FC, ST, LC, MU



Before



After

SFM-250/125 (Ferrule Mate™)

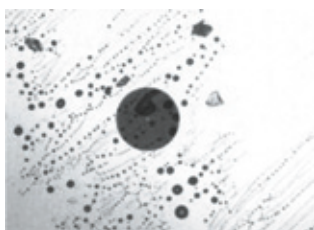
- Latest concept in endface cleaner
- Proprietary mechanism for simultaneously forwarding and rotating cleaning cloth provides effective endface cleaning

U.S.Pat. No.7,476,279



- Handy and high performance cleaner that fits in your hand and equips cleaning cloth achieves cleaning more than 300 times
- Originally developed mechanism for simultaneously forwarding and rotation of cleaning cloth removes contamination easily from ferrule endface
- Tapered tip is ideal for cleaning inside of adapter. Also, by using protection cap, single connector endface can be cleaned

Part Number	SFM-250 (φ2.5mm)	SFM-125 (φ1.25mm)
Application	Ferrule endface cleaning for inner adapter or single connector	
Dimension (body)	L163×W20×H44 mm	
Dimension (tip)	L=63mm	L=110mm
Weight	60g	
Operation	Push button operation	
Life	More than 300 times	
Connector/Adapter Type	SC, FC, ST (both PC and Angle PC)	MU, LC (both PC and Angle PC)



Before



After