

Anaerobic Connector, FC

Single-mode (OS2)

CORNING

Corning anaerobic-cured connectors offer optical performance in a fast, easy field-termination solution designed for fibre-to-the-workstation applications for single-mode and multimode connections. This connector combines the quick-cure convenience of anaerobic adhesive with the performance of epoxy-and-polish connectors. Ideal for enterprise networks and any installations requiring field-installed connectors, the anaerobic-cured technology enables fibre optic networks to be installed cost effectively with minimal tools. Installation of the connector can be accomplished in minutes with the anaerobic adhesive two-part epoxy process. The adhesive is first injected into the connector ferrule, and then the fibre is dipped into the primer and inserted into the connector. Curing takes only one minute without the use of lamps or ovens. With the hand-polish process, an average insertion loss of 0.2 dB is achieved.

Features and Benefits

Quick-cure epoxy

No lamps or ovens needed

Minimal tools and no index-matching gel

Low installation cost

Hand polished for minimum insertion loss

Reliability and optical performance

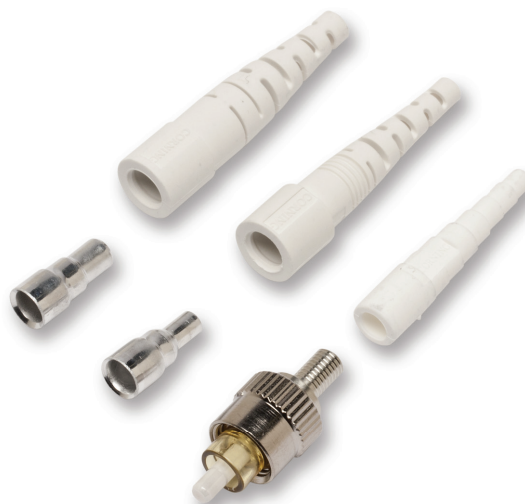
Standards

Intermateability

Compliant with TIA/EIA
604-4



Part Number: 95-201-61-SP



Part Number: 95-201-61-SP

CORNING

Anaerobic Connector, FC

Single-mode (OS2)

CORNING

Specifications

General Specifications

| | |
|----------------|------------------------------|
| Technology | Field Polish (anaerobic) |
| Keyed | No |
| Packaging | Single Pack |
| Product Type | Field-Installable Connectors |
| Corning Logo | Yes |
| Fibre Category | Single-mode (OS2) |

Design - Connector

| | |
|------------------|---------|
| Connector Type | FC |
| Ferrule Material | Ceramic |
| Housing Material | Metal |
| Housing Colour | Metal |
| Boot Colour | white |

Mechanical Specifications - Connector

| | |
|---------------------|--|
| Temperature cycling | ≤ 0.3 dB IL, -40° to $+75^{\circ}\text{C}$, 21 cycles |
|---------------------|--|

Optical Specifications - Connector

| | |
|-------------------------|----------------|
| Insertion Loss, Typical | ≤ 0.2 dB |
| Insertion Loss, Maximum | ≤ 0.75 dB |
| Reflectance | ≤ -40 dB |

Chemical characteristics

| | |
|------|---|
| RoHS | Free of hazardous substances according to RoHS 2002/95/EG |
|------|---|

CORNING

Anaerobic Connector, FC

Single-mode (OS2)



Ordering Information

| | |
|---------------------|--|
| Part Number | 95-201-61-SP |
| Product Description | FC Connector, single-mode (OS2), ceramic ferrule, single pack, metal housing, white boot |

Shipping Information

| | |
|--------------------|--|
| Units per Delivery | 1/1 |
| Package Contents | Connector, crimp band (1.6/2.0 mm), crimp band (3.0 mm), boot (900 µm), boot (2.0 mm), boot (3.0 mm) |

