



 **BRADY**

# M710

**LABEL PRINTER**

**Our fastest, most advanced portable yet**  
Get more done in less time

# MORE SPEED. LESS MESS.

## Print on just about anything.

Take on more jobs, and get them done in record time with the all-new M710 Label Printer. Fast and flexible, it's your tool for seamless label creation from the shop to the field. Design and print with a mobile app, software or keypad and color touchscreen. Enjoy printing on the toughest materials around, plus extra durability from a Li-ION battery that lasts all day long. Better jobsite performance starts with the M710.

### Get more done with:



**Lightning-fast  
print speeds**



**Shop-to-field  
flexibility**



**More than 60 of the  
toughest material  
options around**





► Learn more at [BradyID.com/M710](https://BradyID.com/M710)  
or scan to watch the overview video





# Seamless experience for **LARGER APPLICATIONS**

Print 3 inches per second. Cut labels automatically. Print 4,500 labels on a single charge.

Get the job done right on any jobsite with the M710. With built-in speed, plus added durability to withstand longer days and tougher work conditions, it's our most advanced printer yet. Connect to your work more ways with software or a mobile app designed for 100s of industrial applications. Then design and print using the keypad, your phone or a PC. When you're ready to take on more, make sure it's with the M710.





Withstands 4' drops,  
blowing sand and dust



**A** Prints up to  
3 inches per  
second



**B** Easy material  
loading with  
bulk-size roll option



**C** USB port to import  
and save files, lists  
and graphics



**D** Rechargeable  
Li-Ion battery  
prints up to 4,500  
labels on a single  
charge



### M710 Accessories

Time-saving tools to get  
the job done. **See page 30.**



# One device. **100s OF APPLICATIONS**

Print on just about anything

Boost performance with the M710, our most advanced printer yet. Built for longer days and tougher work conditions, it's easy to create and print labels. Just use the printer keypad, software or app.



## ▶ **Get more done in less time**



Lightning-fast print speeds – 3 inches per second



Advanced battery technology – Prints up to 4,500 labels on full charge



A wider range of industrial applications – Prints on the toughest materials around

## ▶ **Shop-to-field flexibility**



Stay connected wherever your work happens with enhanced Bluetooth technology



Easily import and export label files however you choose



Upload lists and graphics to the printer through USB 2.0 port (Type A and B) or USB flashdrive

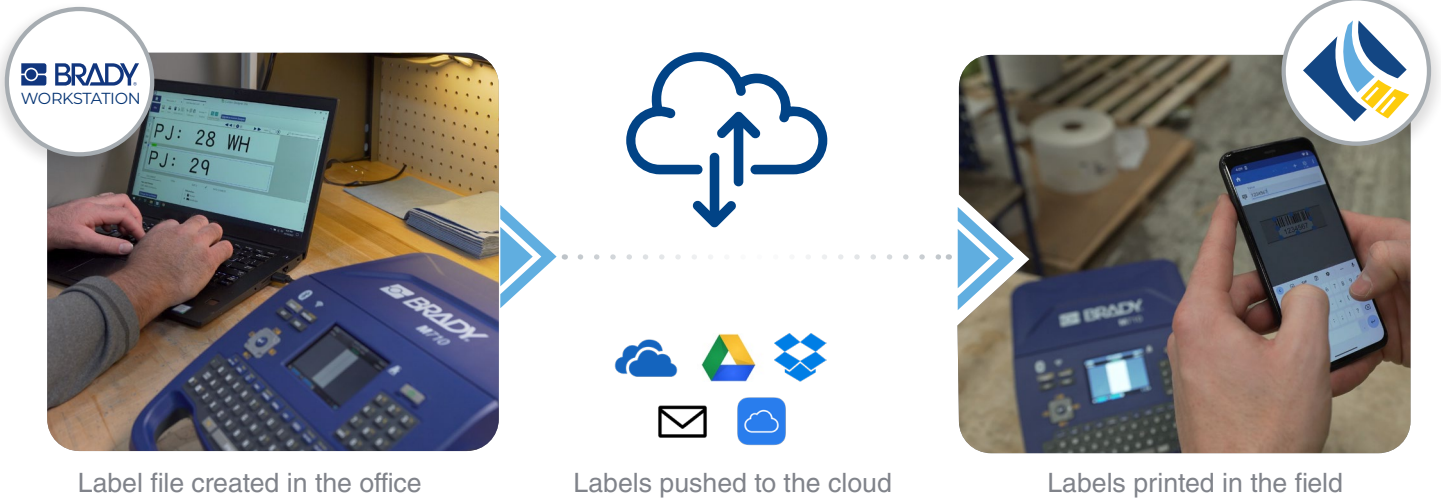


Save and store labels on board. Easily print from wherever your work takes you.



Design and print labels with text, barcodes, shapes and images using the printer keypad, mobile device keyboard or desktop software

# Access files faster. Anywhere you work.



## Brady Workstation software & Express Label Mobile app:

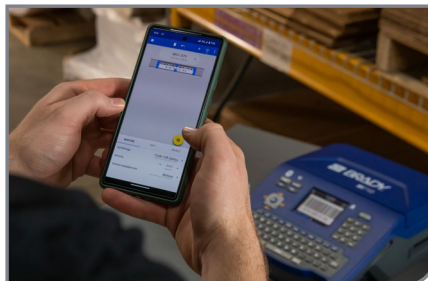
- ▶ 20+ barcode types
- ▶ 85+ fonts
- ▶ 1,400+ symbols
- ▶ Microsoft Excel data imports
- ▶ Label sequencing
- ▶ Label saving and sharing
- ▶ Accurate print preview
- ▶ Real-time printer status

\*Bluetooth printer model is required to use the Express Labels app

## Work the way your work demands



**PRINTER KEYPAD**



**MOBILE APP**



**DESKTOP SOFTWARE**

# THE RIGHT LABEL

## from the right partner

### Print on the toughest materials around

The M710 works hard behind the scenes so you can maintain high performance and work seamlessly. Driven by smart technology, it communicates with label materials and software for smoother label setup and printing. It recognizes and adjusts to material size, type, color, quantity and compatibility, plus sets up proper burn settings and print speed. All this is automatic, saving you trial-and-error adjustments.

### Your time- and cost-saving benefits include:



**DECREASED  
SETUP TIME**



**FEWER  
LABEL ERRORS**



**COMPLIANT  
LABEL CREATION**



**REDUCED  
MATERIAL WASTE**

## Get the job done right on any jobsite

Optimize your performance with Brady materials



### STANDARD ROLLS

- ▶ Get the job done with over 50 high-performance materials and 1300+ label options.



### BULK BOXES

- ▶ Save more — buy in bulk: more than 14 materials and 110+ label options.



### CUSTOM OPTIONS

- ▶ Have specific needs? Enjoy unlimited custom label options in 67+ different materials.



### Enjoy a more premium labeling experience with optimized Brady Authentic materials

Authentic materials work seamlessly with Brady printers to produce enhanced performance and reliability you just don't get with materials from the "other guys." Get authentic. Get better with Brady.



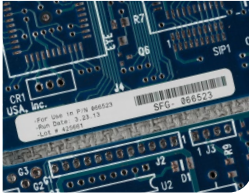
## Hundreds of purpose-built materials. The highly specialized labels you need.

Brady has you covered with the widest range of colors, finishes and targeted applications in the industry.



### All-Weather

Get extra durability outdoors and in tough, industrial workspaces. Choose labels that are reflective or resist UV light, chemicals, salt spray and cleaners.



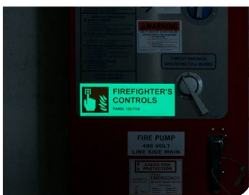
### Electrostatic Dissipative

Use high performance, low profile labels with static dissipative adhesive for machine readable applications, circuit boards and electronic components.



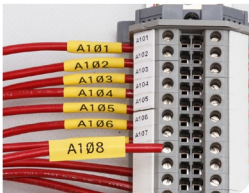
### Flags

Create easy-to-read, permanent identification for wires and cables or to track assets in labs and manufacturing environments.



### Glow in the Dark

Use high luminance labels to communicate safety in low-lit areas. Make exits, stairwells and evacuation routes clear to visitors and employees.



### Heat Shrink

Choose industrial grade, heat-shrinkable sleeve labels for long lasting wire and cable identification. Built to Naval Air Systems Command (NAVAIR) and industry-specific standards.



### Metallized

Use professional metallic-looking labels for rating plates, name plates and general identification of industrial products.



### Multi-Purpose

Rely on white or clear labels for just about any industrial application involving high and low temperatures, harsh environments or regulatory specifications, including low-halide. Choose from various adhesion types: standard, high adhesion, ultra high adhesion or repositionable.



### Tags/Inserts

Get added durability from tags engineered for extreme temperatures and abrasion. Use to wrap wire or cable bundles in patch panels and outlets.



### Tamper Evident

Ensure product and sample integrity with tamper-evident labels. Choose from labels that fracture easily, leave a VOID footprint or destruct upon removal.



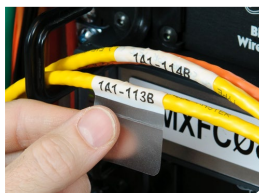
### Unique Materials

From labels adhering to VELCRO® to durable, raised identification for switches, and even magnetic labels – Brady has you covered. Here are some of our most unique materials.



### Washdown Resistant

Choose specially constructed labels built to outlast the harshest washdowns. Ideal for food and beverage processing.



### Wrap Around

Protect important wire and cable ID using labels with a clear laminating barrier. The clear vinyl resists abrasions and chemicals while keeping the white printable area intact.



## Bulk parts for high-volume printing

Bulk label parts offer a cost-effective solution for high-volume printing with the M710 printer. Look for material catalog numbers that begin with "BM", "BMC", "BM7" or "BM7C".

*\*Bulk label printing requires the media feeder and smart-cell spool which are included in the bulk material packaging.*